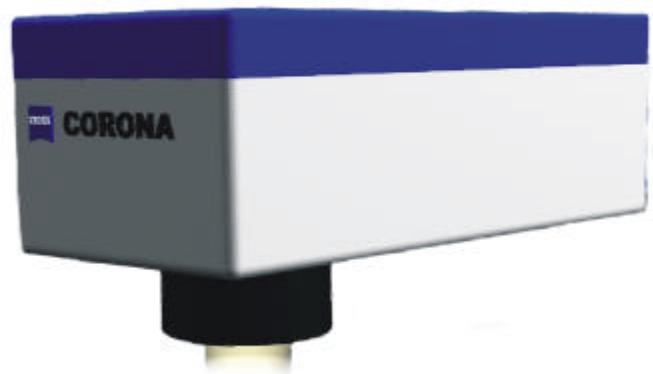


CORA - Software Package for Agriculture and Food

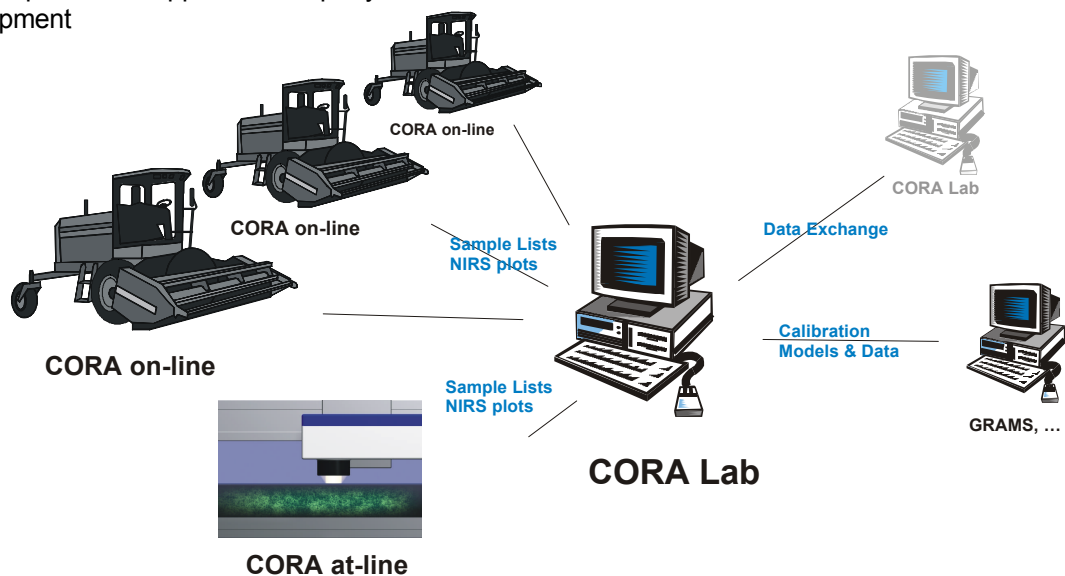
CORA is a software program package specially designed for the requirements of agriculture and food processing. Its great ease of operation, data security, data base administration, spectral manager and the possibility of integrating a great variety of data make this package a top-of-the-line option in on-line, routine and field analysis. Applications include monitoring GPS coordinates, specimen temperature and different chemometric calibration models.

Benefits

- ❖ New open software concept
- ❖ Dual use: On-line and At-line
- ❖ Extensive sample list management
- ❖ Customizable operation, measurement, prediction and output
- ❖ Multiple and expandable support of third-party external equipment



CORONA sensor unit



Configuration for agriculture fields



株式会社 スペクトラ・コープ

〒164-0011 東京都中野区中央4-4-5第一小林ビル

Tel:03-5328-2858 Fax:03-5328-2859

URL <http://www.spectra.co.jp>

Dual use On-line and At-line

- One touch / automatic operation
- Active (switchable) display
- Easy-to-read results & status indicators
- Scrollable plot list
- Multiple level password protection
- Sample list management and processing
- Future customizable options

Sample Lists - the central data collections

ASCII sample lists hold all information

- Origin: Station, Operator and Software
- Measurement and Operation
- Additional Measuring Devices
- Prediction & Evaluation
- Output Specifications
- Plot File Names and Prediction Results

Sample lists can be...

- Generated automatically in on-line mode
- Checked and post-processed
- Edited and transferred
- Prepared at-line for on-line measurements
- Customized (header tags)

Spectra Manager

- Management and processing of spectra
- Visualization of spectra
- Generation of filters for elimination of outliers

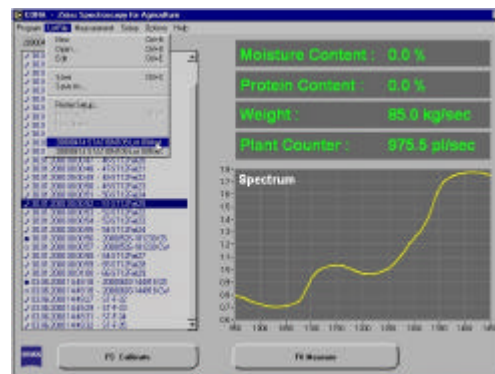
Customizing the Data Evaluation

- Selection of calibration to be applied, produced from different analytical packages (GRAMS, ...)
- Enable / Disable prediction
- Specification of several prediction values (results, residuals ..) to be used as measurements results for selected data output

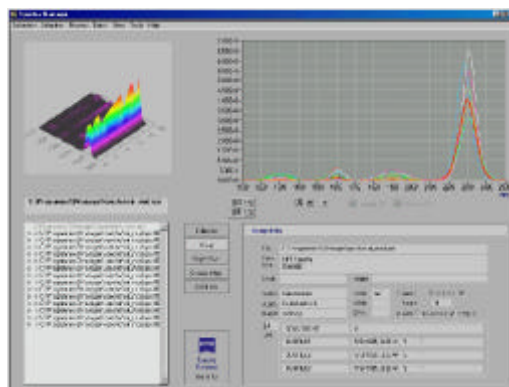
Customizing the Data Output

Selectable data output options including:

- Configurable ASCII tables
- RS 232 on-line uni-directional data stream (string format customizable)



Sample list



Spectra Manager

Measurement & Operation settings

- Spectrometer settings, interpolation and averaging
- Adjustments for outlier detection & removal
- Measurement trigger mode: wire, keyboard, touch screen, time
- Operational options include: timed, manual or automatic calibration, active control of sample processing equipment via dig. I/O

Setting up the Measuring Station

- Identification of measuring station and operator
- Assignment, activation and setup of additional measuring devices on this local station, e.g.. Scales, Plant counter, Barcode readers, Grain counters