

Mounting Instructions

Preamplifier DZA-S390x to MCS Spectrometer Module

Product Designation: DZA-S3901-4

Status: 28.Nov.02

Name: Britta Jobst / Gert Noll
Datum: 28.Nov.02
File: Instruction for Mounting Preamplifier DZAS390x to MCS

Page 1 (3)



株式会社 スペクトラ・コープ

〒164-0011 東京都中野区中央4-4-5第一小林ビル

Tel:03-5328-2858 Fax:03-5328-2859

URL <http://www.spectra.co.jp>

Bill of Material

Carl Zeiss MCS spectrometer module (all versions with Hamamatsu S390x series PDAs)

tec5 preamplifier DZA-S390x series

shielding panel, 1 piece

setscrew or threaded pin, 2 pieces

spacer, 2mm (plastic), 2 pieces

hex standoff, 2 pieces

spring washer, 3mm, 2 pieces

screw, M3 x 6, 2 pieces

Mounting

Warning: Any damage caused by unprofessional treatment is not covered by any guarantee!

Place the setscrews into the threaded holes on either side of the PDA. Finger tighten. (Fig. 1). Put a spacer on each screw (Fig. 2).



Fig. 1: Setscrews on MCS

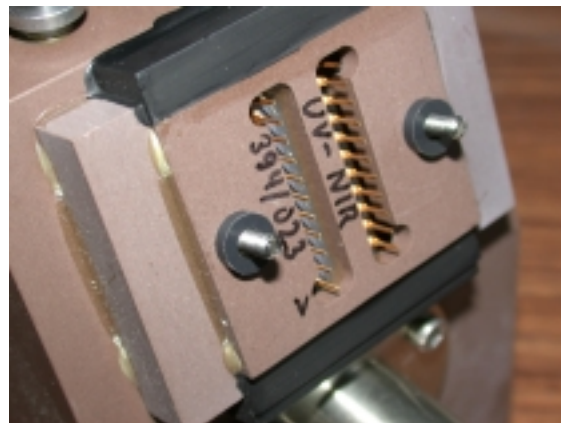


Fig. 2: Setscrews with spacers

Place the spring washers on top of the spacers (Fig. 3). Carefully mate the pre-amp board to the PDA, starting with pin 1 (Fig. 4).

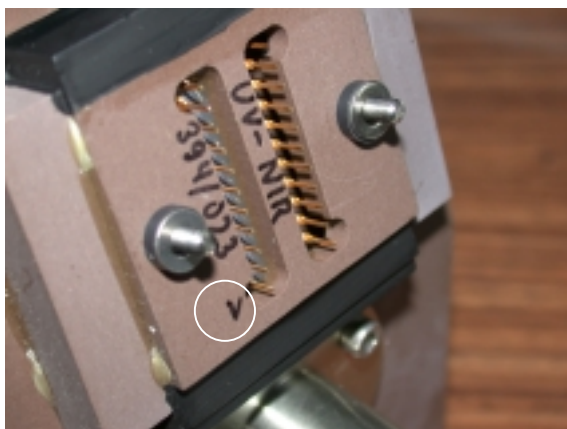


Fig. 3: Washers on spacers

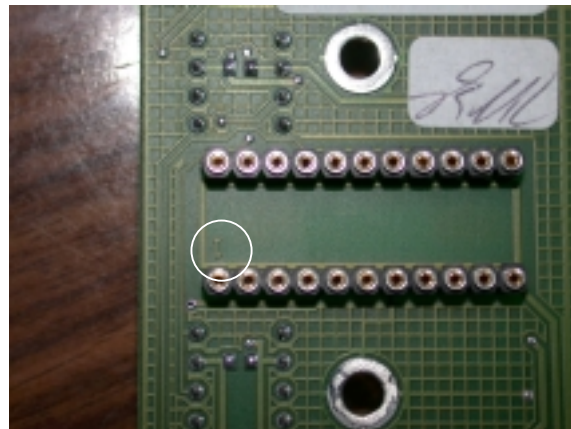


Photo 4: Preamp with pin 1

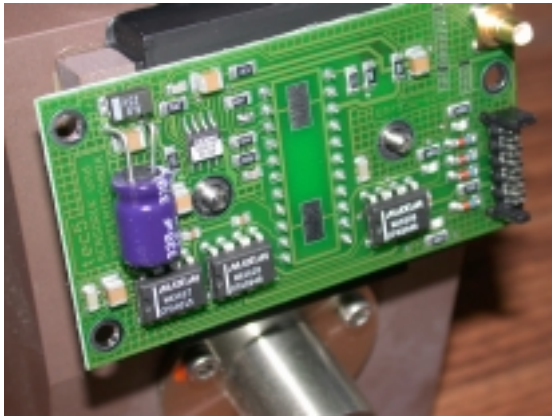


Fig. 5: Mounted preamp

Screw the hex standoffs onto the exposed ends of the setscrews. (Fig. 6). Mount the shield and secure to the hex standoffs with the M3 x 6 screws. (Fig. 7).



Fig. 6: Standoffs mounted

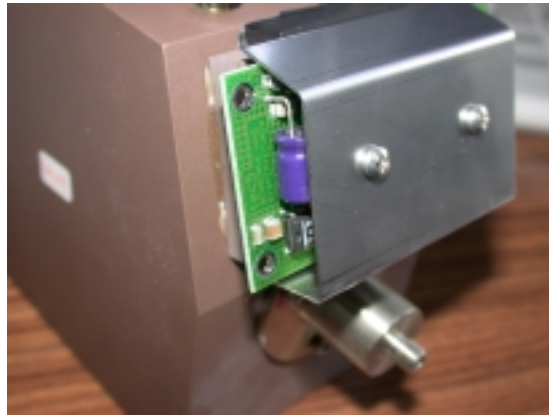


Fig. 7: Shielding panel, fixed by two screws

Finally, attach the analog and digital cable to the preamp board. Note the keying of flat-ribbon cable (Fig. 8).

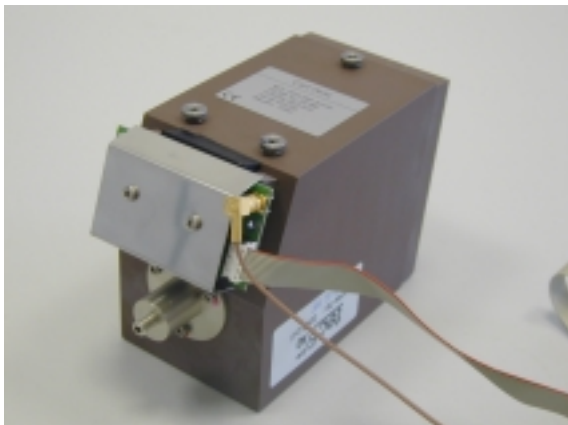


Fig 8: MCS unit complete